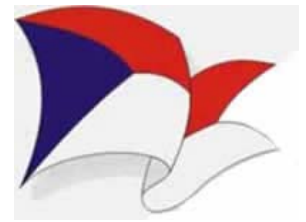


# Carolina Sailing Club

## CSC 2018 Championship Series

### Sailing Instructions (May 11, 2018)



#### 1. Rules

- 1.1. The regattas will be governed by the rules as defined in the Racing Rules of Sailing.
- 1.2. OUTSIDE HELP: A boat may receive outside help. Competitors and the Race Committee may provide advice to inexperienced competitors and help for any boat in need without penalty. This changes Racing Rule 41.

#### 2. Entries

- 2.1. Boats skippered by a 'Full', 'Sustaining', 'Commodore's Circle', 'Under 30', or 'Under 21 or Student' member in good standing or a guest of the Carolina Sailing Club, may enter by registering at or before the competitors meeting on the day of the race. ("Good standing" means that dues are paid, the skipper is signed up for race committee prior to racing, and has met his or her two-day RC commitment by the end of the season.) A guest, including 'Associate', 'Supporting' or 'Winter' members, may skipper for only one club weekend.

#### 3. Notices to Competitors

- 3.1. Notices to competitors will be posted in a location specified by the PRO.

#### 4. Changes to Sailing Instructions

- 4.1. Changes to the Sailing Instructions will be posted immediately following the competitors meeting.
- 4.2. Oral changes to the Sailing Instructions may be made by the PRO on the water by raising Race Signal "L" and notifying and receiving verbal or visual acknowledgement from each boat.

#### 5. Signals Made Ashore

- 5.1. Signals made ashore will be displayed on the Race Committee boat at dock or in the parking lot on a Race Committee boat trailer.
- 5.2. When AP is displayed ashore, the warning signal will be made not less than 45 minutes after AP is lowered. This modifies Race Signal AP.

#### 6. Schedule

- 6.1. The **Full Season Series** shall consist of all Championship Series races scheduled April through October. Three races will be scheduled each race day for a total of 48 races of which 15 races are required to constitute a series. Make up days may be scheduled. The race schedule and notices about rescheduled races will be posted on the CSC web site.

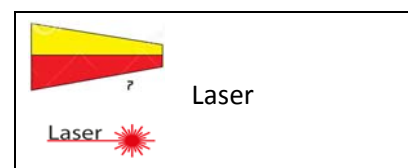
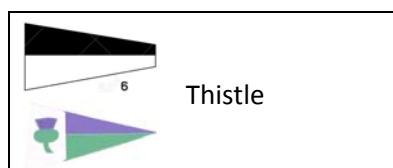
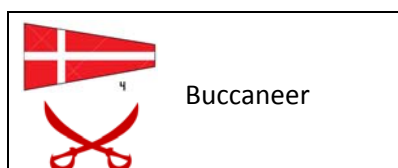
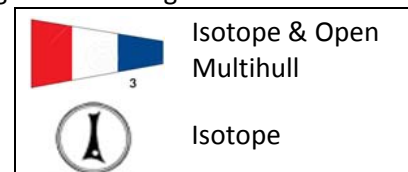
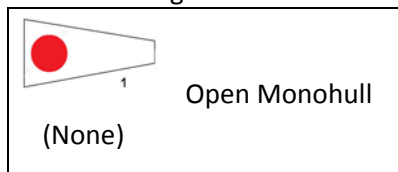
- 6.2. The schedule for the competitors meeting and warning signals for each day of racing are:

Competitors Meeting    10:00  
 Warning Race #1        11:30  
 Two subsequent races   back to back

- 6.3. Kerr Lake competitors meetings will be held in the south parking lot at Henderson Point.
- 6.4. Jordan Lake competitors meetings will be held in the parking lot near the boat ramps at Vista Point.

#### 7. Class Flags

- 7.1. The Class flags will be international numeral pennants or flags bearing the class insignia.



#### 8. Racing Area

- 8.1. The racing area will be located about 0.5 mile from the launching area.
  - 8.1.1. Kerr Lake: off Henderson Point.
  - 8.1.2. Jordan Lake: off Vista Point.

## 9. Course and Marks

- 9.1. The diagrams and text in Attachment A describe the courses and the order in which marks are to be passed.
- 9.2. The course for each race will be displayed from the stern of the race committee boat and designated as described in Attachment A.
- 9.3. Marks 1, 2, and 3 are large orange cylinders. The offset mark is a small yellow tetrahedron or orange cylinder.
- 9.4. The starting and finishing lines will be from the course side of the pin to the orange flag on the signal boat.
- 9.5. The RC has the option to use a gate in place of the leeward mark. The signal boat shall fly the "G" flag if a gate is to be used.
- 9.6. If Race Committee signals a change in position of the windward mark (Rule 33), an offset mark will not be deployed with the changed mark.



## 10. Time Limits

- 10.1. If no boat has finished within 90 minutes, the race will be abandoned.
- 10.2. Boats failing to finish within 30 minutes after the first boat in their class sails the course and finishes will be scored DNF without a hearing. This changes RRS 35 and A4.
- 10.3. A boat starting later than 5 minutes after her starting signal will be scored DNS without a hearing. This is a change to RRS A4.

## 11. Penalty System

- 11.1. For Monohull Classes the first two sentences of RRS 44.1 are changed to: "A boat may take a One-Turn Penalty when she may have broken a rule or rules of Part 2 or Rule 31 while racing. However, when she may have broken a rule of Part 2 while in the zone around a mark other than a starting mark, her penalty shall be a Two-Turns Penalty."
- 11.2. For Multihull Classes, RRS 44.1 is changed so that the Two-Turns Penalty is replaced by the One-Turn Penalty.

## 12. Protests

- 12.1. Protest forms are available from the Race Committee.
- 12.2. Protests shall be delivered to the Race Committee within 30 minutes after the Race Committee signal boat returns to shore and sounds the docking horn.
- 12.3. Hearings will be held on shore as soon as possible after racing each day.

## 13. Scoring

- 13.1. The series will be scored using the Cox-Sprague scoring system, as described at <http://goo.gl/kbAUbB> and modified by these Sailing Instructions. This changes rules A4 and A9.
  - 13.1.1. A skipper scored DNS, DNF, RET, DSQ, or OCS shall be scored points for the finishing place one more than the number of boats competing in the race. A boat that did not compete shall not receive a score. This modifies RRSs A4.2 and A9 and Cox-Sprague. A boat that enters the starting area after her warning signal shall be scored as competing in the race.
  - 13.1.2. The Series score for each skipper will be the sum of her points in that Series divided by the maximum possible number of points for that Series, after discarding throw outs earned.
  - 13.1.3. A throw out will be earned for every six races in which the skipper participates. This modifies RRS A2.
  - 13.1.4. Isotope and Open fleets will have their elapsed times corrected according to the Portsmouth Yardstick with wind-dependent modifications. No further modifications will be applied.
- 13.2. Two or more boats in a class constitute a race. This modifies RRS 90.3(a). If only one boat is present in a class, that skipper will sail and be scored in the Open fleet for that race and will receive participation for its class fleet.
  - 13.2.1. If just one skipper races in the Open fleet, they shall receive participation for that race, but no score.
- 13.3. Skippers in Board-recognized fleets will be scored for trophy purposes.
  - 13.3.1. A skipper qualifies for series trophies by participating in at least 45% of the races completed by their class.
  - 13.3.2. Trophies will be awarded for each class based on the average number of skippers competing in the class.

Average number of competitors	Trophies
0.0 – 1.9	0
2.0 – 3.9	1
4.0 – 6.9	2
7.0 – 9.9	3
Each additional three boats	1 additional trophy

- 13.4. In addition to class racing and scoring, all boats will be scored together as an overall open class.
  - 13.4.1. All boats will have their elapsed times recorded and then corrected according to the Portsmouth Yardstick with wind-dependent modifications. No further modifications will be applied.
  - 13.4.2. Classes with different starting times will be scored together for the purpose of the overall open trophy.
  - 13.4.3. If a race is sailed by only some classes that are competing on a day or if classes sail different courses in a race, that race will not be used for the overall open trophy.
  - 13.4.4. Scores will be compiled such that a skipper sailing different boats in different races has one set of results.

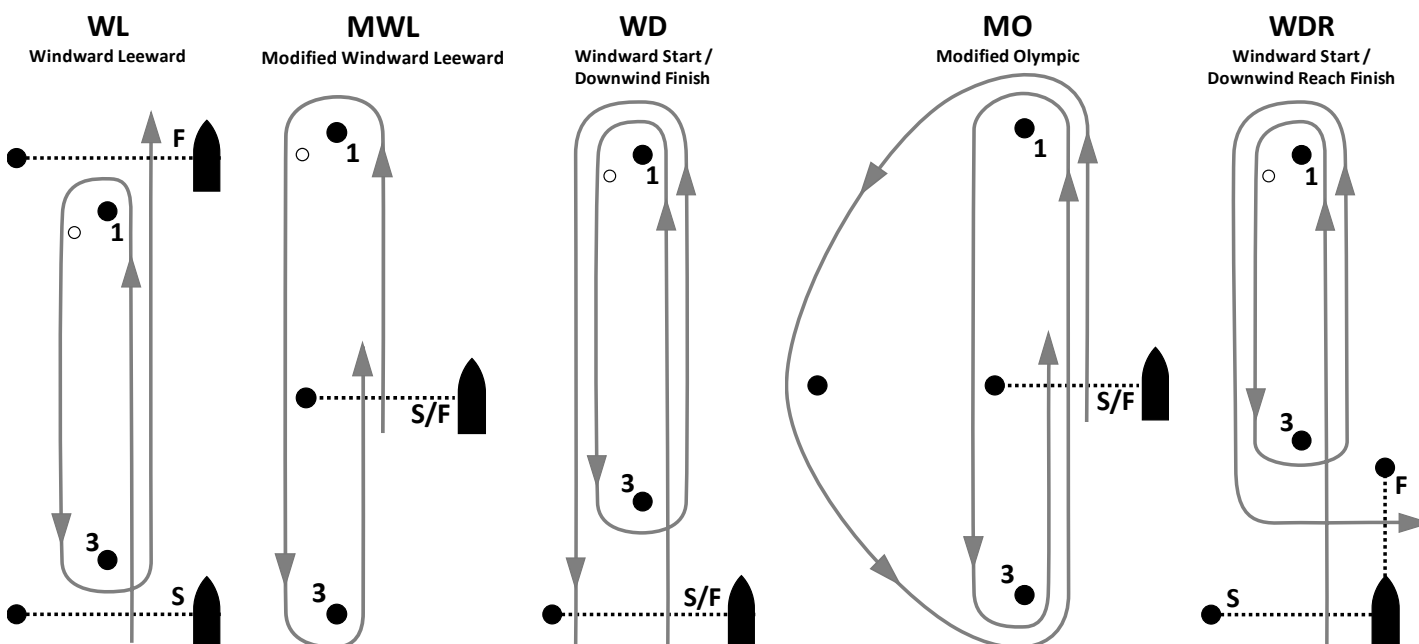
## 14. Safety

- 14.1. Prior to first warning signal of each day, competitors shall check in by sailing by the stern of the signal boat, hailing Race Committee with their sail number or other identifying information and being acknowledged by the Race Committee. Only Race Committee can protest a boat for not checking in.
- 14.2. A skipper that retires from a race shall attempt to notify the race committee on the water.
- 14.3. When the water temperature is at or below 50 degrees Fahrenheit all competitors must wear a personal flotation device and competitors under the age of 18 must wear a wetsuit or dry suit.

## 15. Disclaimer of Liability

- 15.1. Competitors participate in the series regatta at their own risk. See RRS 4, Decision to Race. The organizing authority will not accept any liability for material damage or personal injury or death sustained in conjunction with or prior to, during, or after the regatta.

# CSC Championship Series Courses Attachment A



**WL** indicates a windward-leeward course with a windward start and windward finish. This course includes an offset mark (OM) to port of the windward mark. **Start-1-OM-3-Finish**. If other than 1 lap, the number of laps will be displayed, and the 1-OM-3 will be repeated for each additional lap.

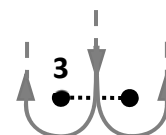
**MWL** indicates a modified windward-leeward course. This course includes an offset mark (OM) to port of the windward mark. **Start-1-OM-3-Finish**. If other than 1 lap, the number of laps will be displayed, and the 1-OM-3 will be repeated for each additional lap.

**WD** indicates a windward-leeward course with a downwind finish. This course includes an offset mark (OM) to port of the windward mark. **Start-1-OM-3-1-OM-Finish**. If other than 1 lap, the number of laps will be displayed, and the 3-1-OM will be repeated for each additional lap.

**MO** indicates a Modified Olympic course. **Start-1-2-3-1-3-Finish**.

**WDR** indicates a windward-leeward course with a windward start and a reach finish. This course includes an offset mark (OM) to port of the windward mark. **Start-1-OM-3-1-OM-3-Finish**. If other than 1 lap, the number of laps will be displayed, and the 1-OM-3 will be repeated for each additional lap.

Leeward Gate Option



Any leeward mark can be replaced with a **Leeward Gate** in which case competitors must pass through the gate in the downwind direction and then round one of the two marks that form the gate, heading upwind outside one of the marks.